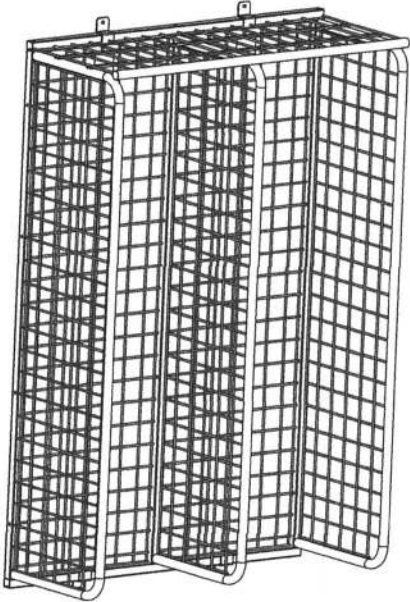


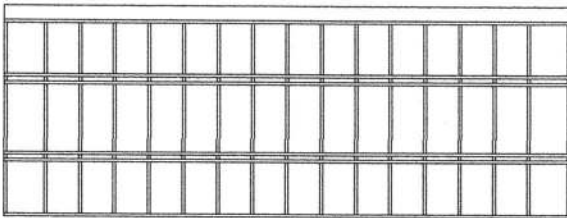
*Available for 18", 20" and 24" wide lockers only
Cannot be used with door option



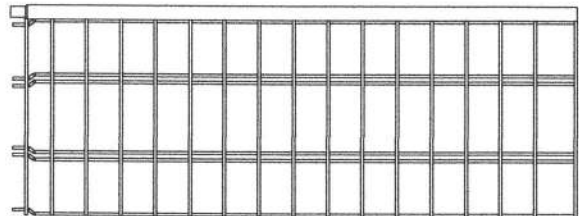
Tools Required:

- 7/16" Wrench
- 7/16" Socket and ratchet

The components below are used for the TOP-SIDE STORAGE™ shelf. They are comprised of two separate parts for many combinations of locker "runs." The TOP-SIDE STORAGE™ start is the component that starts the run on top of the locker system. The TOP-SIDE STORAGE™ extension is the component that mates to the TOP-SIDE STORAGE™ start for extended runs.



TOP-SIDE STORAGE™ START



TOP-SIDE STORAGE™ EXTENSION

THANK YOU FOR CHOOSING GEARGRID for smarter, stronger, storage solutions.

670 SW 15th Street, Forest Lake, MN 55025 | Toll Free: 888-643-6694 | 651-464-4468 | Fax: 651-464-4780
sales@GearGrid.com | www.geargridcorp.com

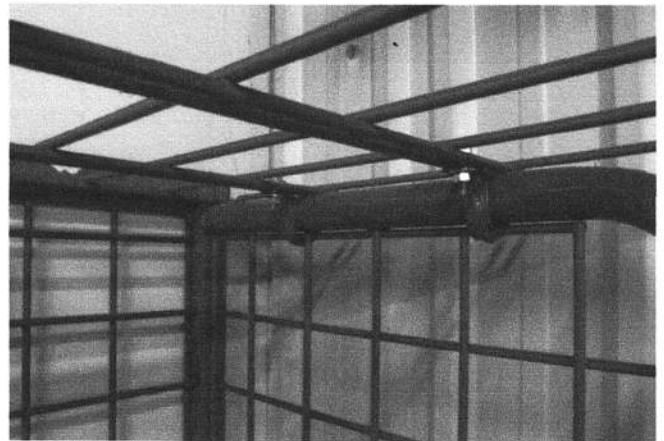
TOP-SIDE STORAGE™ Shelf Installation

Step 1: Place the TOP-SIDE STORAGE™ start on top of the locker with the long wires facing down on the left side of unit. Using the clamps and hardware provided fasten the unit down. There will be four bolts and clamps for one TOP-SIDE STORAGE™ start, two for each end of the unit.

The bolts will go through with a washer on top of double wires and a washer below the long double wires. Fasten with the supplied 1/4" nut and tighten. Use the same hardware for the other side of the start.

Step 2: If a TOP-SIDE STORAGE™ extension was ordered: Install it after the TOP-SIDE STORAGE™ start is installed by sliding the narrow end of the tube into the TOP-SIDE STORAGE™ start tube as shown below. Fasten the right-end down with the clamps and provided hardware per the instructions above.

NOTE: There will only be 2 clamps and bolts with each TOP-SIDE STORAGE™ extension.



Step 3: Insert black plastic plugs provided to cap the tube ends. Check that all clamps are secure to prevent shelf from sliding prior to loading shelf.