

STEP 1:

MOUNT SHELF BRACKETS TO THE WALL IN DESIRED LOCATION. ENSURE THE BRACKETS ARE MOUNTED LEVEL AS THE STORAGE SHELF IS MOUNTED ON TOP OF THE BRACKETS. BRACKET MOUNTING HARDWARE NOT INCLUDED.

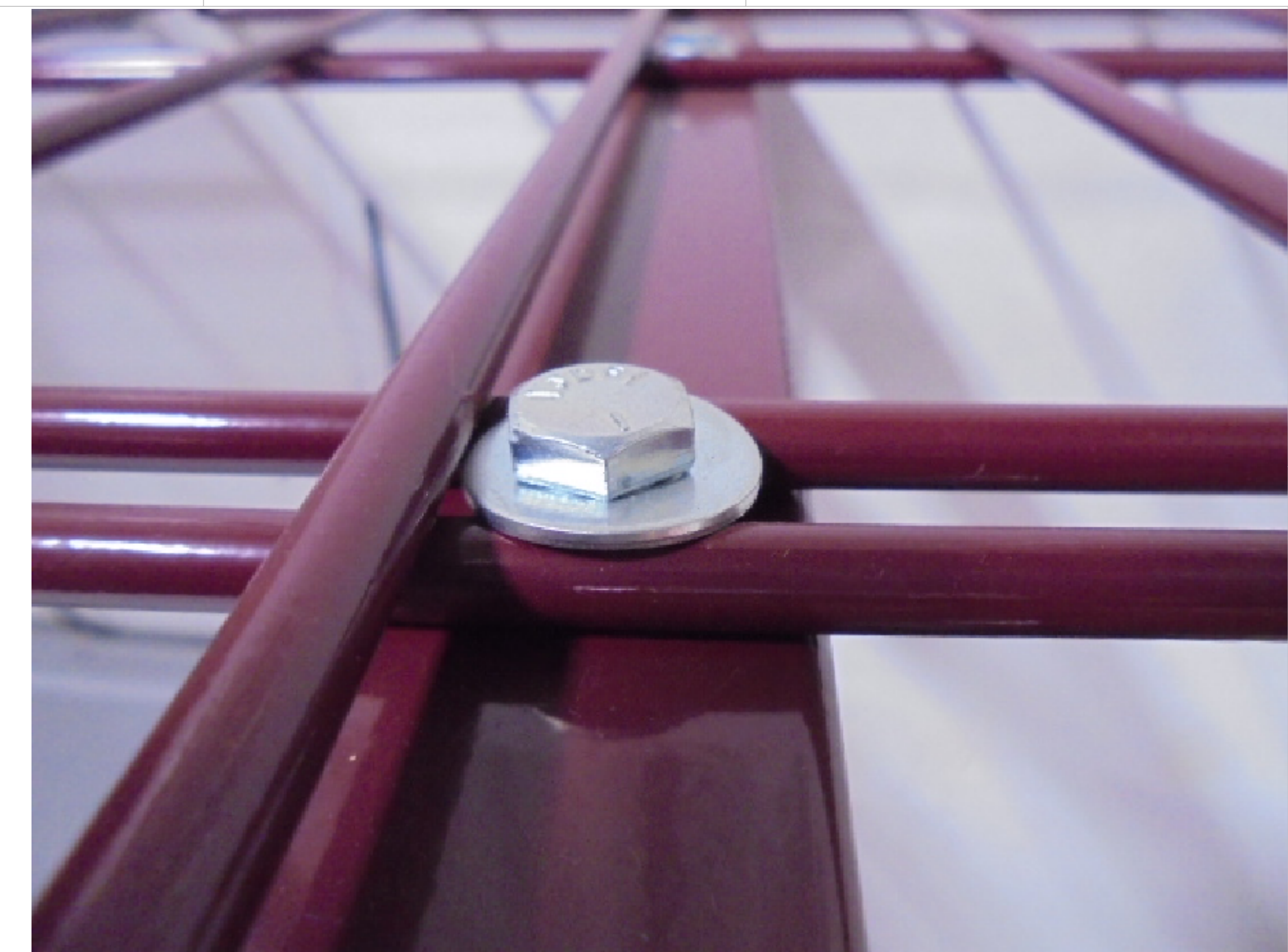
NOTE:

6' SHELF WILL USE 3 SHELF BRACKETS
4' SHELF WILL USE 2 SHELF BRACKETS



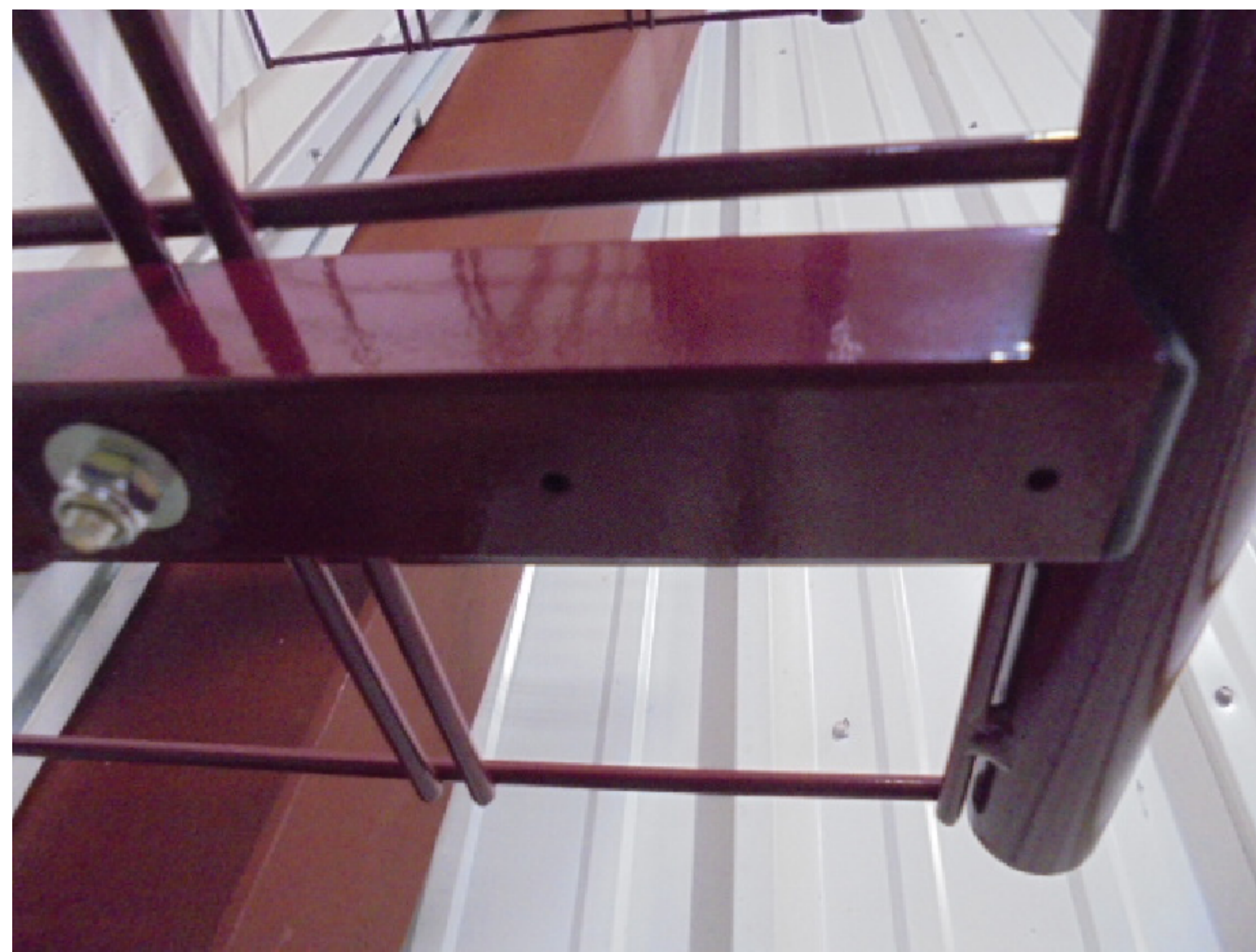
STEP 2:

PLACE SHELF ON TOP OF BRACKETS WITH LONG DOUBLE WIRES DOWN AS SHOWN. INSERT 1/4-20 X 2" BOLTS WITH WASHERS THROUGH THE TWO WIRES AND THROUGH THE BRACKETS AS SHOWN.



STEP 3:

IMAGE SHOWS WASHER AND BOLT IN POSITION ON TOP. INSTALL HARWARE ON EACH BRACKET. USE WASHERS ON THE BOTTOM SIDE AND HAND START THE NUTS. ONCE SHELF IS POSITIONED THEN TIGHTEN HARDWARE.



STEP 4 (OPTIONAL HANGBAR):

IF HANGBAR WAS ORDERED WITH SHELF THE TWO HOLES SHOWN ABOVE LOCATED ON THE SHELF BRACKETS WILL BE USED FOR THE HANGBAR BRACKET.



STEP 5 (OPTIONAL HANGBAR):

PLACE HANGBAR IN HANGBAR BRACKETS AND USE THE SELF DRILLING SCREWS TO MOUNT TO THE SHELF BRACKETS.

GEARGRID		NAME	DATE	TITLE:
DRAWN		LUKE B.	07-09-2020	WALL MOUNT STORAGE SHELVES, 4'-6'
ENGINEER		UNLESS OTHERWISE SPECIFIED:		
DIMENSIONS ARE IN INCHES		ANGLE MACHINED	±.5"	SIZE
ANGLE FORMED		±1"	XXX	PART NO.
TWO PLACE		±.03	XXX	REV
THREE PLACE		±.010	XXX	01
HOLE Ø		±.005		
MATERIAL				
FINISH				

DO NOT SCALE DRAWING | SHEET 1 OF 1